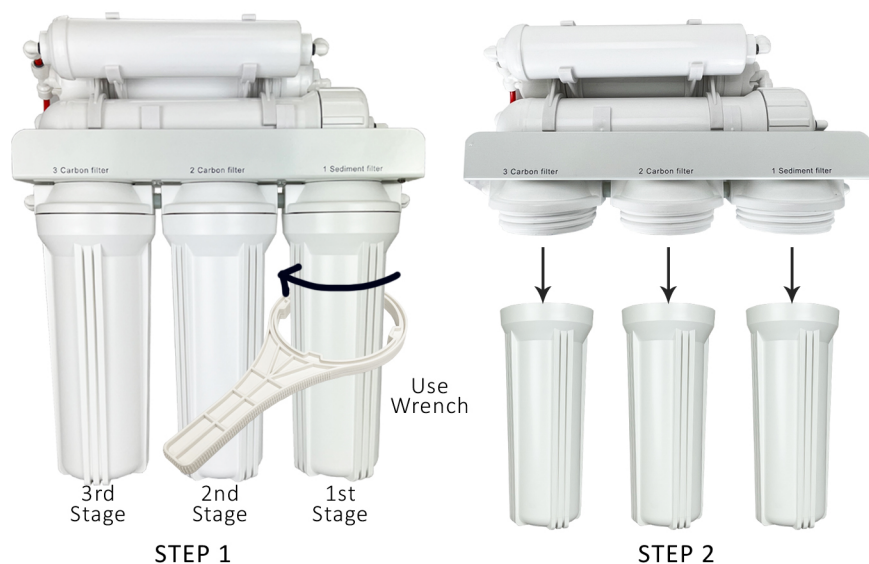


APEX EXPRT MR-6050 System Filter Change Instructions

Changing Stages-1, 2, 3 Pre-Filters: (should be changed every 6 months)

- 1) Turn OFF the cold water supply to RO system by turning the handle on the feed water adapter to the right until the handle is perpendicular to the tubing. Turn OFF the tank ball valve by turning the gray handle 90 degrees until the handle is perpendicular to the tank tubing. Turn on RO faucet lever briefly to relieve the built-up pressure inside the RO system. This will make opening the housings easier.
- 2) Open housing: Have the RO standing upright. Slip the plastic wrench around the housing. Looking down from a top view, you should open the housing turning **clockwise**. If necessary, lay RO down on the floor to get better leverage. If the housing is too tight, use a hammer and gently tap on the wrench handle to help turn the wrench.
- 3) Discard 3 used filters, wash housings with mild soap, rinse off. Put 3 new filters into their respective housings: sediment filter in stage-1, carbon block filters in stages 2 & 3.
- 4) Close up the housings by turning **counter-clockwise**. Make sure each housing has a black O-ring in the thread grooves. Use a wrench to tighten each housing.
- 5) **Remember: Turn ON the cold water supply and OPEN the tank valve after finished changing filters!**



Changing Stage-4 Membrane: (should be changed every 1 year)

- 1) Turn OFF the cold water supply to RO system. Turn OFF the tank ball-valve. Turn on RO faucet lever briefly to relieve the built-up pressure inside the RO system. This will make opening the housings easier.
- 2) See **Fig. B**. Locate the Membrane housing on the system (labeled "Membrane"). Remove the WHITE tubing from the housing's cap at **point D**. For Quick Connect fitting, push IN and hold down on the gray collet ring square against the fitting. With the collet held in this position, pull out the tubing. Then open up the cap (turn **counter-clockwise**). Remove the used membrane. Discard. Insert the new membrane using a pair of pliers. Push membrane into housing tightly. **Avoid touching the Membrane with your hands to prevent contamination!**
- 3) **Important!** Make sure the "double-ring" end of the membrane goes into the housing first as shown in **Fig. A**. above. The membrane cannot filter water if it's inserted in the WRONG direction!
- 4) Close the housing cap. Reconnect the WHITE tubing to the cap. **Turn ON** the feed water adapter and **OPEN** the tank valve after finished changing filters! Let the RO system run to re-fill the tank (takes about 2-3 hours).
- 5) **Check for leaks!**
- 6) **Drain the first tank of water (through faucet) to flush out the new membrane!** The 2nd tank of water is ready for use.

Changing Stage-5 Post Carbon Filter: (should be changed with the membrane every 1 year). The post-carbon filter (RF-1001) has an elbow fitting on each end. The stage-5 filter is easily replaced by disconnecting the tubings from the old filter and connecting the new filter. **Make sure to remove the fittings from the old filter, so you can reuse them on the new filter.**

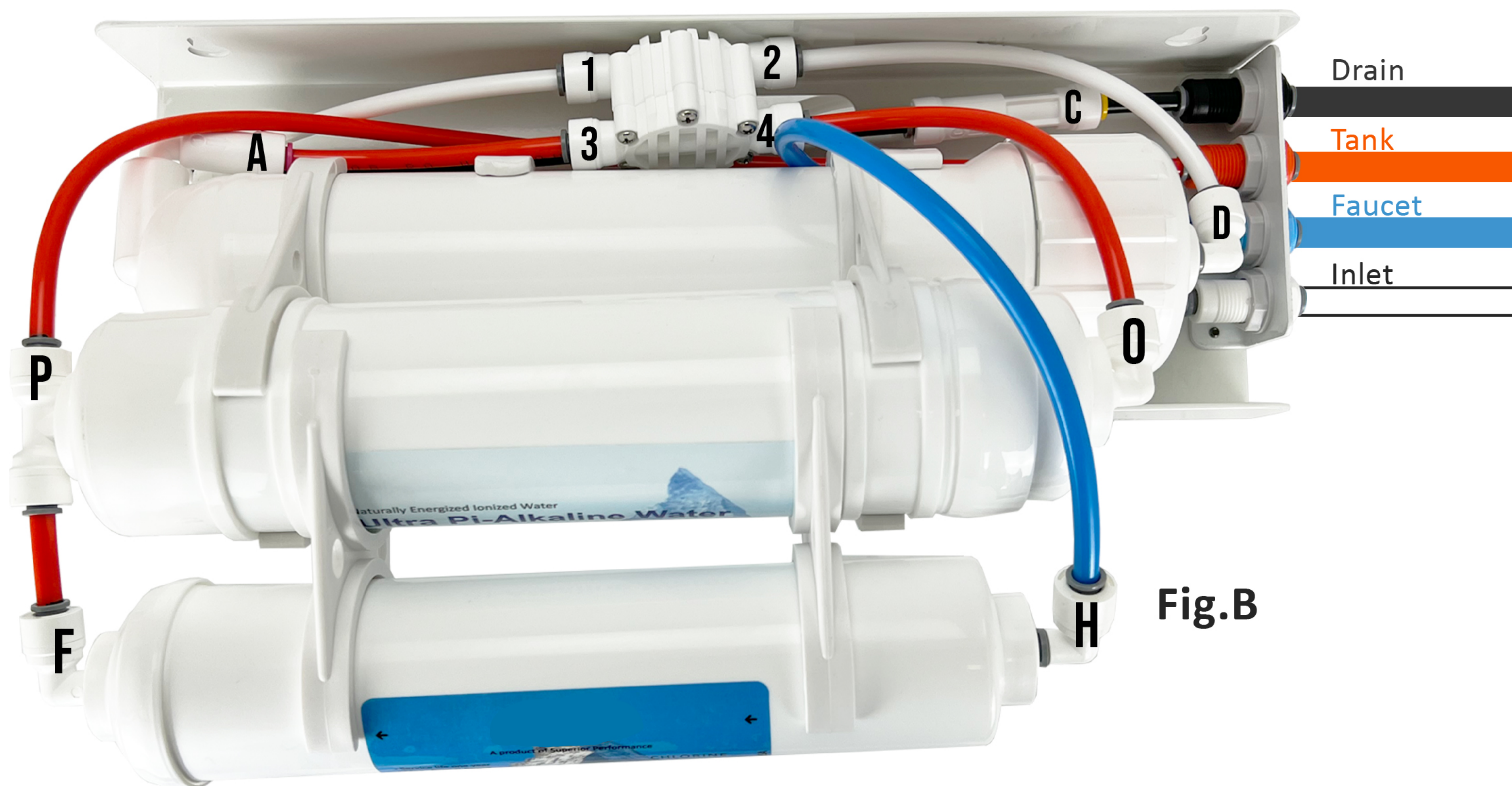


Fig.B

1) Remove the OLD filter: See **Fig. B**. Disconnect the blue output tubing from **point H** and the orange input tubing at **point F**. To remove the tubing, **Push-In** and **Hold Down** on the collet ring square against the fitting. With the collet held in this position, pull out the tubing.

2) Unclip the old filter from the membrane housing and discard the used filter.

3) Connect New Filter: See **Fig. B**. Attach the new filter onto the clips. Reconnect the orange input tubing back to **point F**. Then, connect the blue output tubing to **point H**.

NOTE: The QC fittings come with an **End Plug that needs to be removed** before the tubing can be connected. **Push-In** and **Hold Down** on the collet ring. With the collet held in this position, pull out the plug. See **Fig. D**.



Fig.D

5) **Check for leaks!**

Changing Stage-6 PH Filter: (should be changed at least every 6-8 months)

1) Turn OFF the cold water supply to RO system by turning the handle on the feed water adapter to the right until the handle is perpendicular to the tubing. Turn OFF the tank ball valve by turning the gray handle 90 degrees until the handle is perpendicular to the tank tubing. Turn on RO faucet lever briefly to relieve the built-up pressure inside the RO system. This will make opening the housings easier.

2) Remove the outlet tubing at **point P** See **Fig. B**. To remove the tubing push in and hold down on the collet ring square against the fitting. With the collet held in this position the tubing can be removed. Once the outlet tubing is disconnected, please remove the inlet tubing at **point O**. Remove old filter and discard.

3) To reconnect the tubing to **point O** and **P**, push the tubing into the Quick Connect fitting, then gently pull back on the tubing to make sure the connection was secure.